

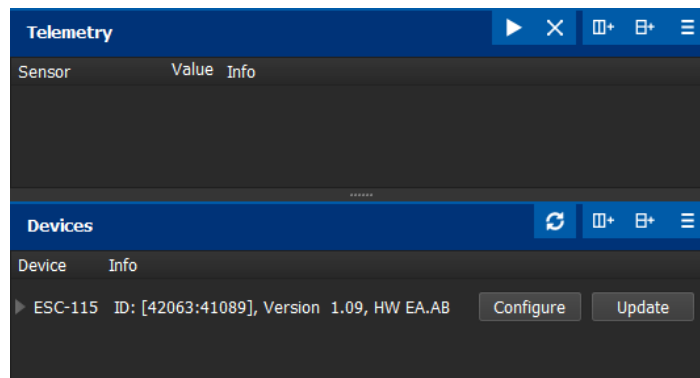
FALCON/IBEX ESC RELEASE NOTES

VERSION 1.10

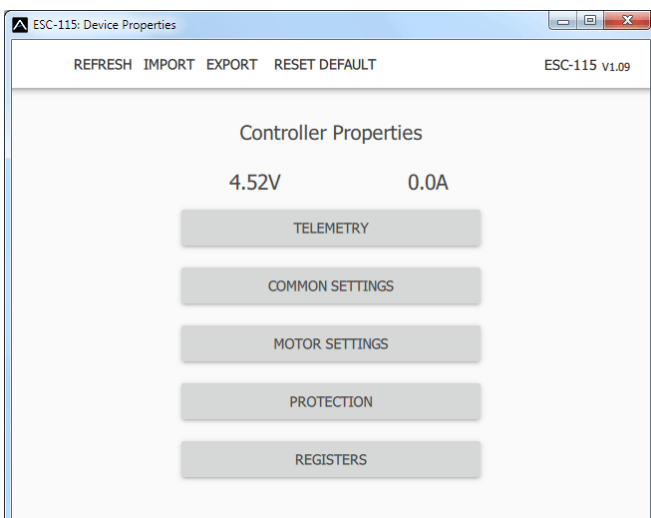
- Improved on-the-fly startups (When the propeller is spinning).
- Optimized PC configuration.

VERSION 1.09

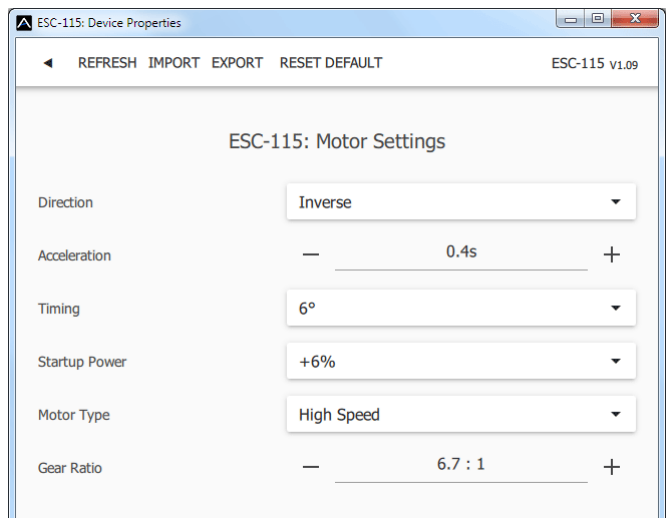
- Supports the latest controller types: ESC-200, ESC-220, ESC-115, ESC-155, ESC-55, ESC-65.
- Implemented **Powerbox P²Bus** telemetry. The telemetry is detected automatically during startup and the ESC offers similar telemetry values as for JETI EX (Battery voltage [V], Motor current [A], Capacity [mAh], Speed [RPM], PWM [%], Power [W], Running time [s], Energy [Wmin], Temperature [°C], External temperature [°C], Motor status (0-5).
- When using **Powerbox P²Bus**, it is also possible to assign a dedicated throttle-reversing channel, which is read directly from the bus. ESC configuration, at the moment, is not possible through the transmitter.
- Better handling of motor startups while the propeller is spinning (on-the-fly start) and if the Freewheeling mode is set to “Active braking”. The reaction is now faster and smoother.
- Controller configuration through the PC-USB interface. Use the latest version of MAV Manager (1.4.0 and newer) and connect the ESC through the interface to your PC. After the auto-detection is performed, you'll be able to enter the configuration menu.



The ESC is automatically detected by the MAV Manager.



Main menu.



Motor settings.

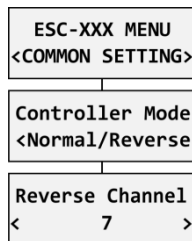
VERSION 1.08

- Reduced heat generation when the PWM value is close to full throttle.

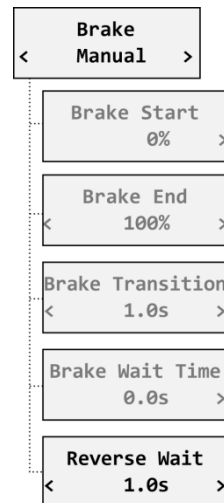
VERSION 1.07

- Propeller positioning is now disabled if the ESC temperature gets above 100°C. Default positioning PWM has been reduced to 5%.
- Added motor reversing feature (EX Bus, S.Bus2, SRXL2).

Set the “Controller Mode” to “Normal/Reverse” and choose one of the serial bus channels to control the direction.



You can play with the brake settings and a *reverse wait time* under “Manual” brake type.



VERSION 1.06

- Added support for BEC controllers with optional switch and backup battery support.
- Added Spektrum SRXL2 integration in a separate firmware file.

VERSION 1.04

- Improved MPX telemetry detection.
- Propeller positioning: Added a telemetry status value (No.5) that informs you about the prop outside of the correct position.

VERSION 1.03

- Initial version.